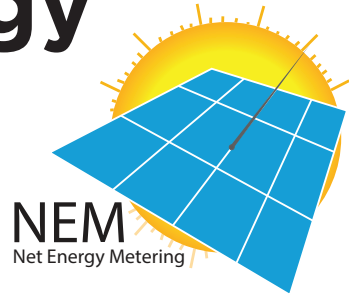


# Net Energy Metering (NEM)



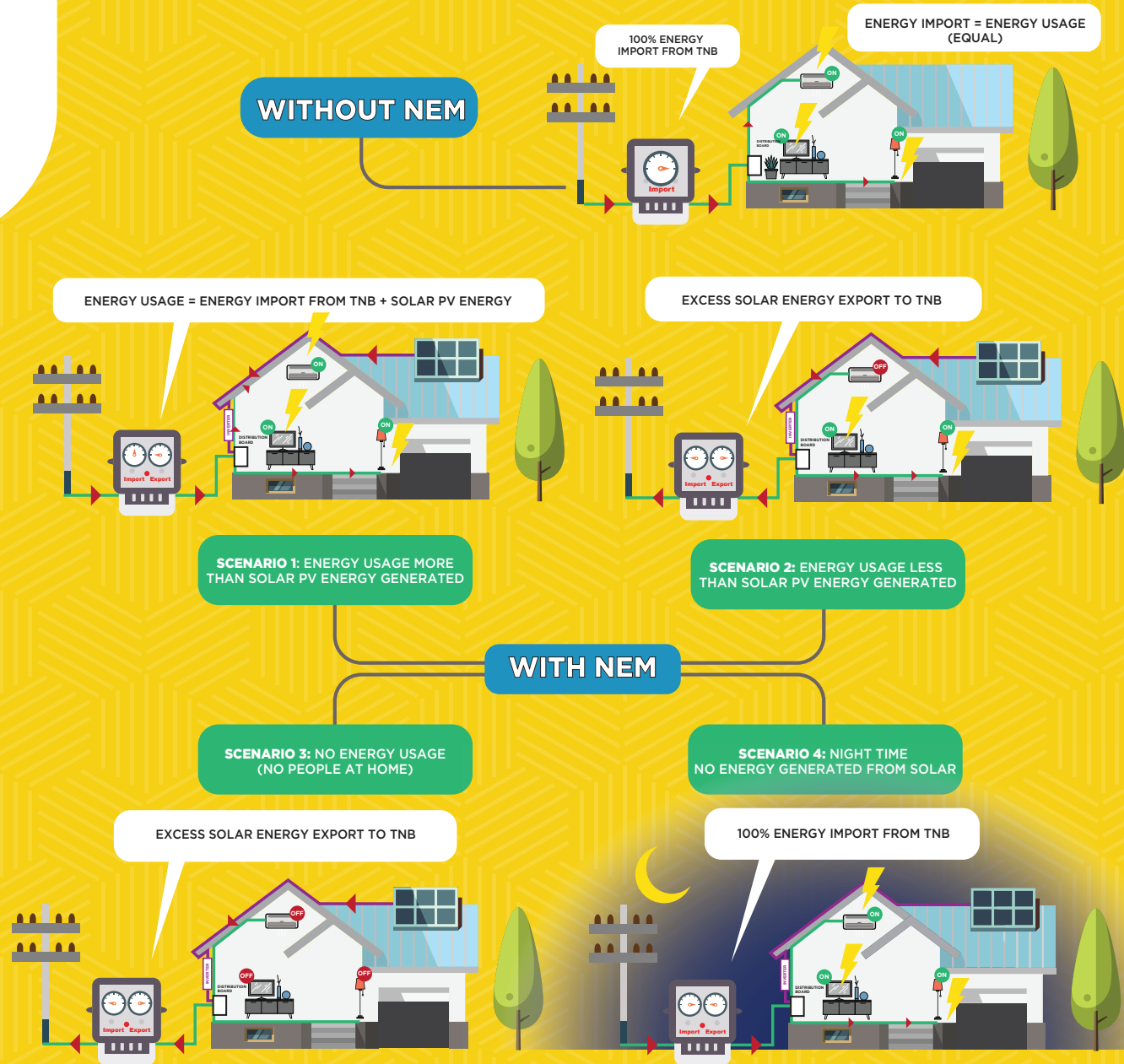
## WHAT IS NEM?

NEM or Net Energy Metering is a practice where energy produced from the solar PV system installed will be consumed first, and any excess to be exported to TNB. Effective 1st January 2019, the new mechanism of NEM will allow electricity users who had installed solar panels at their home or premises to reduce electricity bills and hence create savings. The excess energy calculation will be based on the 'one-on-one' principle in this improved NEM mechanism.

For more information regarding NEM or how to apply, please visit:

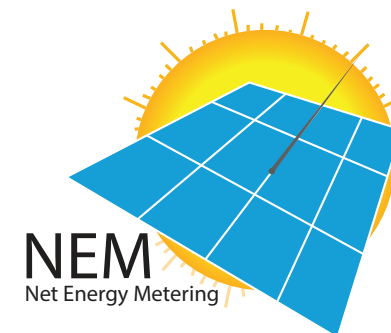
[www.seda.gov.my](http://www.seda.gov.my)

## NEM CONCEPT SCENARIOS



# Net Energy Metering (NEM)

## NEW NEM CALCULATION



### PREVIOUS NEM

Solar energy that is produced from the installed PV system will be consumed first. Any excess will be exported and sold to TNB at the prevailing Displaced Cost prescribed by Energy Commission.



### Effective 1<sup>st</sup> January 2019 NEW NEM

The new Net Energy Metering (NEM) has been improved by adopting the true net energy metering concept and this will allow excess solar PV generated energy to be exported back to the grid on a one-on-one offset basis.

